



# INDOFINE Chemical Company, Inc.

121 Stryker Lane, Bldg. 30, Suite 1 • Hillsborough, NJ 08844 • U.S.A.

Phone: (908) 359-6778 • FAX: (908) 359-1179

website: [www.indofinechemical.com](http://www.indofinechemical.com)

e-mail: [chemical@indofinechemical.com](mailto:chemical@indofinechemical.com)

## CERTIFICATE OF ANALYSIS

Cat No.: CS-647

Product: 4-METHOXYBENZOYL CHLORIDE

CAS Number: [100-07-2]

Lot Number: 1304315

Chemical Formula: C<sub>8</sub>H<sub>7</sub>ClO<sub>2</sub>

Molecular Weight: 170.60

Appearance: Pale yellow liquid

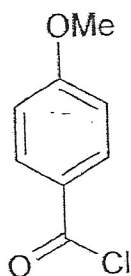
Solubility: Soluble in chloroform

TLC: Hexane:Ethyl acetate (8:2)

Stability: Stable(Store under nitrogen atmosphere at 10-20°C)

Storage: Cool dry place

Purity(GC): 99.22%





# INDOFINE Chemical Company, Inc.

121 Stryker Lane, Bldg. 30, Suite 1 • Hillsborough, NJ 08844 • U.S.A.

Phone: (908) 359-6778 • FAX: (908) 359-1179

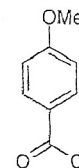
website: [www.indofinechemical.com](http://www.indofinechemical.com)

e-mail: [chemical@indofinechemical.com](mailto:chemical@indofinechemical.com)

## GC ANALYSIS

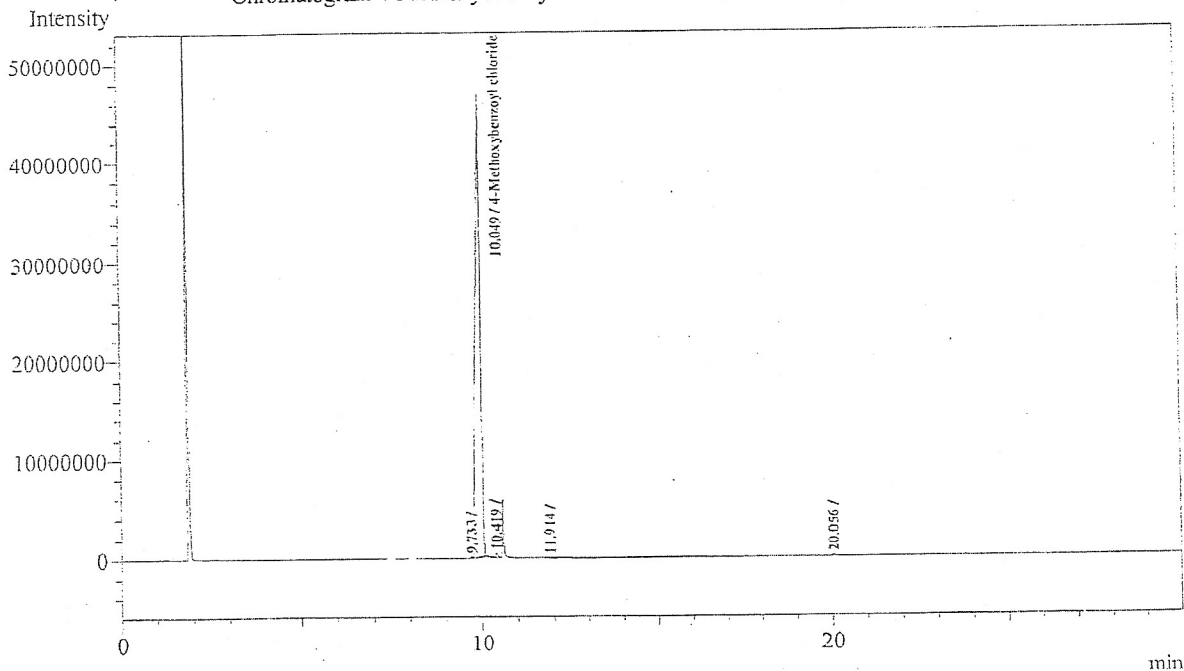
Analysis Date & Time : 4/2/2013 12:10:35 PM  
User Name : Sanjeev  
Sample Name : 4-Methoxybenzoyl chloride  
Sample ID : 12.5 Kg Lot  
Method Name : D:\Methods\BRC Method.gcm  
Data File Name : D:\GC Data\2013\APR-2013\020413013.gcd

Catalog no.: CS-647  
Product name: 4-Methoxybenzoyl chloride  
Lot No.: 1304315



Description  
Injector - 250°C  
Detector - 300°C  
Column temp - 60(2)-20-280(18)

Chromatogram 4-Methoxybenzoyl chloride D:\GC Data\2013\APR-2013\020413013.gcd



Peak Table - Channel 1

Peak#	Ret.Time	Area	Height	Area%	Name
1	9.733	513977	150282	0.1230	
2	10.049	414752182	47024640	99.2182	4-Methoxybenzoyl chlo
3	10.419	1329101	425168	0.3180	
4	11.914	240377	34740	0.0575	
5	20.056	1184719	124111	0.2834	
Total		418020356	47758941	100.0000	